

# RANGE 10 SOP

## RANGE DESCRIPTION

Range 10 an active, small arms, live-fire range located at Grid 79607250. It is accessible from MCB-5.

## INFORMATION

Description: Multipurpose Small Arms Range (Max range 370m)

Status: Active

Location: 79607250

Number Firing Points: N/A

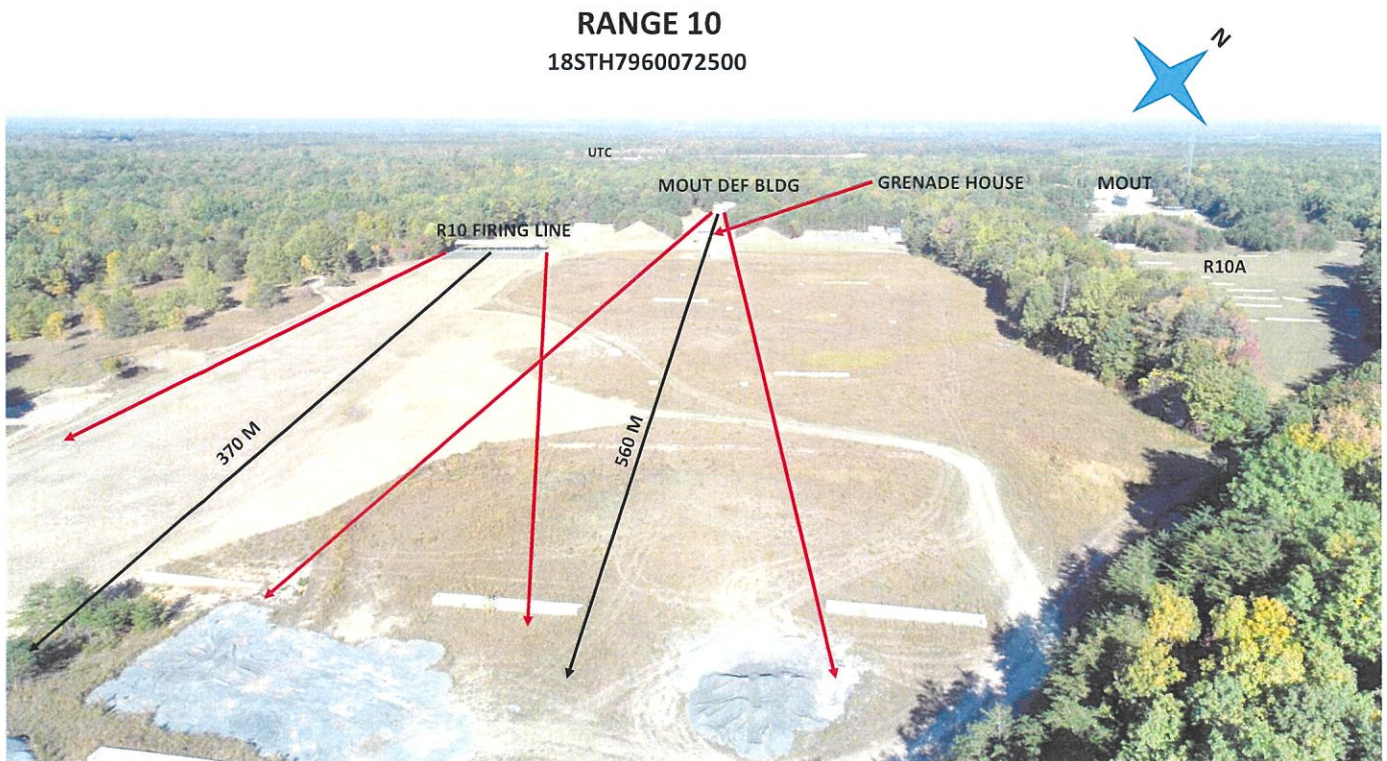
## RANGE USES

Primary Use: Small arms static fire

Alternate Use: Live Grenade Room Clearing

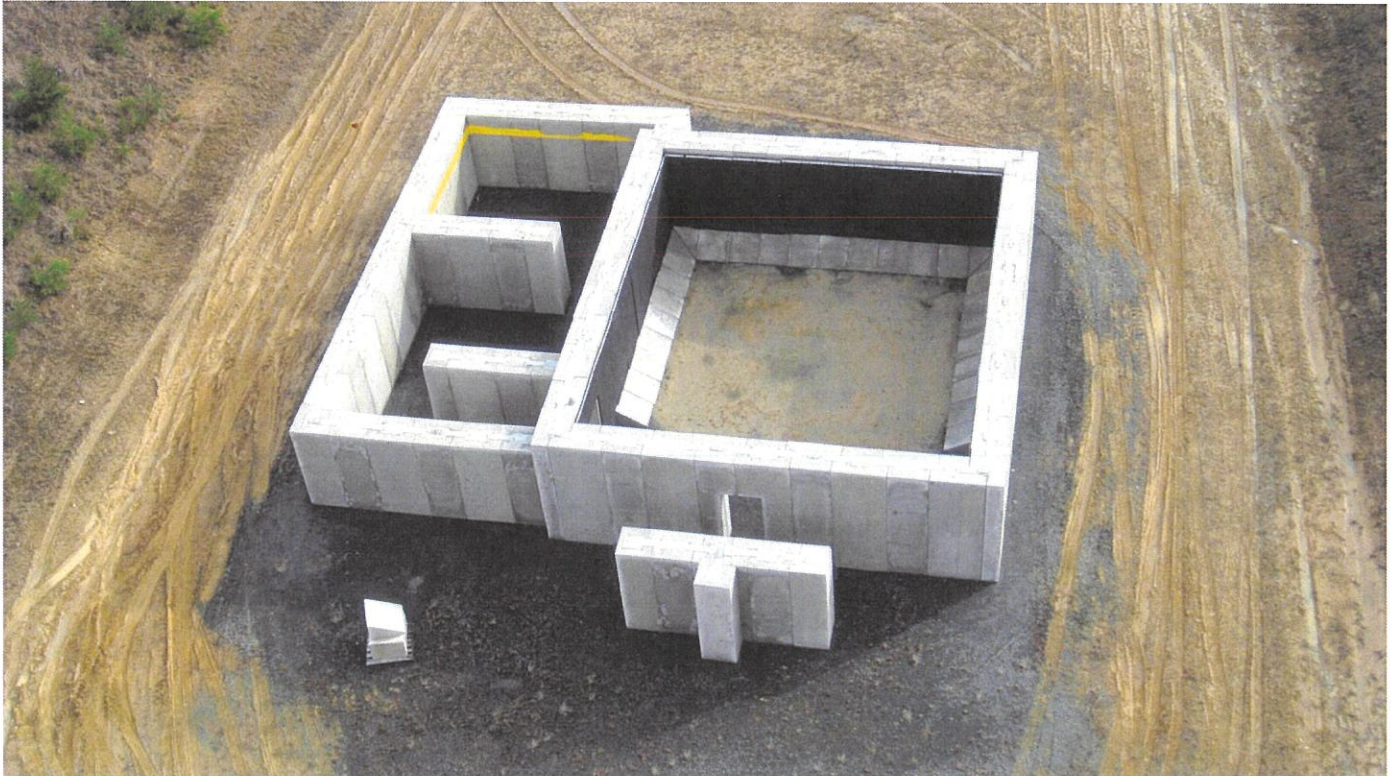
PRIMARY DIRECTION OF FIRE: Southeast

## RANGE 10





**LIVE FIRE GRENADE HOUSE**



**RANGE INFORMATION:**

Number Firing Points: Multiple.

**WEAPONS ACCOMMODATED:** Detailed list is maintained in the Range Facility Management Support System (RFMSS).

- Pistol
- Shotgun
- Service Rifles
- Automatic Rifles
- Sniper Rifles
- 40mm Grenade Launchers, Handheld
- Light and Medium Machine-guns
- Approved foreign weapons
- Hand grenades
- Pyrotechnics/Simulators
- Fragmentation hand grenades (In grenade house only)

**AMMUNITION AUTHORIZED:** Detailed list is maintained in the Range Facility Management Support System (RFMSS).

- Pistol (all)
- Shotgun (All)
- 5.56mm (All)
- 40mm Handheld, Illumination, Non-lethal
- 7.62mm X 51mm Ball/link
- 7.62mm X 51mm Special Ball (.308)
- 7.62mm X 67mm (.300 WinMag)
- Approved foreign ammunition up to 7.62 X 54R
- Hand grenades: practice, illumination, smoke, flashbangs/diversionary
- Pyrotechnics
- Fragmentation hand grenades (In grenade house only)
- Approved Nonlethal Ammunition
- Riot Control/CS Grenades (Coordinated with Range Control)

**TARGETS/SIMULATORS/DEVICES.**

- Portable Infantry Targets (PITS), Training IED's, simulators, etc. are approved for this range and must be coordinated through the Training Systems Support Desk (TSSD).
- Additional targets are limited to paper, wood, plastic and approved ballistic steel reactive targets (SRT).
- OIC/RSO must ensure all targets are placed and engaged to ensure rounds do not exceed the left and right lateral limits.
- Steel reactive targets (SRTs) must be a minimum of 3/8" and constructed of AR-500 or greater steel.
- EPR ammunition (M855A1/M80A1) is NOT authorized to be fired on SRTs or steel protective plates for Portable Infantry Targets (PITS).
- Contact Training Support Center (TSC) at (703)432-7026/7969 for target support or questions.
  
- Trackless Mobile Infantry Targets (TMITs) are not approved on this range.
- All new events must be coordinated with the Installation Range Safety Officer (IRSO) no less than 30 days prior to any new event.

Minimum engagement distances for ballistic steel reactive targets (SRT):

-Pistol: 7 meters  
-Shotgun (bird/buck): 10 meters  
-Shotgun (slug): 50 meters  
-5.56mm/.223 Ball/link: 150 meters for TSC targets  
100 meters for unit-owned targets  
-7.62mm Ball/link: 150 meters for TSC targets  
100 meters for unit-owned targets  
-7.62mm Special Ball: 150 meters  
-.300 WinMag Ball: 300 meters

-Approved foreign weapons ammunition

-Pistol: 7 meters  
-5.45mm: 150 meters for TSC targets  
100 meters for unit-owned targets  
-7.62mm Ball and linked: 150 meters for TSC targets  
100 meters for unit-owned targets  
-7.62mm x 54R: 150 meters for TSC targets  
100 meters for unit-owned targets

PRIMARY DIRECTION OF FIRE: Southeast

RANGE USE RESTRICTIONS/COMMENTS

1. Only weapons and ammunition listed in this document will be used on this range.
2. All range regulations and SOP's will be adhered to.
3. OIC and RSO must be present while live fire is in progress.
4. All brass, trash, targetry and materials will be removed completely at the end of training by the using unit. This includes any materials used to place targets on.
5. Ensure range flags are posted, ear protection is worn (eye protection for steel), safety brief is given, Range Control contacted and all fires are directed between the left and right lateral limits markers (striped).
6. Targets are limited to wood, paper, plastic, approved ballistic steel and the automated targets assigned to this range. No other targets will be used such as bowling pins, clay targets, cans, etc. **No targets will be placed where the SACON protective walls become backstops.**
7. **Note\*\*.**300WinMag will penetrate 3/8" ballistic steel at distances closer than 150 meters.
8. Units that do not occupy their range within two hours of their scheduled occupy time and have not contacted the Fire Desk will lose the use of that range for that day.

9. Units that have requested contractor support (PITS targets, Training IED's, simulators, etc.) are required to contact a Government representative (TECOM Systems Support Officer (SSO) or Fire Desk) if the unit will not be present on the specified range within 1 hour of the approved time in RFMSS.

10. Units that have occupied a range with approved contractor support (PITS targets, Training IED's, simulators, etc.) and that have not begun to use that support within 2 hours of the approved time in RFMSS will forfeit all contracted support for the day.

11. Units that are training with contractor support (PITS targets, Training IED's, simulators, etc.) that place themselves into a voluntary check fire for 2 hours or more during the approved support hours will forfeit remaining support for the day.

NOTE: Units that encounter situations where contractor support (PITS targets, Training IED's, simulators, etc.) is delayed or interrupted by circumstances beyond the control of the requesting unit (RMB directed check fire, ASP support, MEDEVAC, etc.) must contact a Government representative (SSO or Fire Desk) in order to arrange continued support within the scope of the contract and available assets.

12. If Training IED's or simulators, are to be used in this facility, qualified personnel trained on the systems must be present.

13. The Live Fire Grenade House (LFGH) is the only place on Range 10 where M67 fragmentation grenades can be employed. Hand grenades will be used in the main room only. 5.56mm and 9mm can be fired inside the LFGH using portable bullet traps.

14. All hand grenade training will be in accordance with the appropriate TMs. Practice grenades must be thrown immediately prior to using live grenades.

15. Grenades in the LFGH (no small arms live fire) and the rest of Range 10 can be co-utilized at the same time if coordinated. All personnel within 150m of the LFGH will wear proper protective equipment.

16. There will be no one downrange of the MOUT Defensive Building (MDB) when it is being fired from. This includes the LFGH and the rest of Range 10.

17. If there is a live fire event in MOUT, exit from Range 10 down the gravel road towards MOUT is prohibited. A barrier must be emplaced on the road between R10 and R10A. This must be coordinated with Range Control.

18. Units using Range 10 must contact Range Control prior to leaving ensure the safest route out.

19. Management and use of the classroom trailer and head facility located at R-10 is the responsibility of NCIS and will only be used and operated by MDIA personnel unless otherwise authorized. Units that desire to use the trailer must submit a request to NCIS Headquarters, AA&E Branch at 571-305-9269/9921/9275 or e-mail NCIS\_Code11B\_ARMS@NCIS.NAVY.MIL.

20. A copy of the trailer keys will be maintained by NCIS. Keys will only be given to non-MDIA units upon NCIS approval.

21. The state of police, lights-out, bathroom plumbing, and the exterior of the trailer will be inspected by MDIA personnel during the post-inspection prior to non-MDIA units departing the range.

**FACILITIES (Number of Each)**

Towers: 0  
Sheds: 0 Covered firing line  
Ammo Breakdown: 0  
Parking: Limited to gravel parking lot  
Description of Other Structures: Classroom, Head facility

**UTILITIES AVAILABLE**

Electricity: At classroom  
Lights: None  
Water System: None

**INSTALLED COMMUNICATIONS.** None

**LASERS AUTH:** Class 1 - 3R. Standard aiming devices mounted on approved service rifles. Class 3B can be fired if safety filter is on, reducing power output.

**AVAILABLE DAYS/HOURS:** 362/All

**AREA SUITABILITY:**

<u>Unit Type</u>	<u>Unit Size</u>	<u>No. of Units</u>
Combat arms	Platoon	1
	Squad	3

**GEOGRAPHICAL DATA:**

Access Routes	MCB 5 from MCB-6 or MCB8/Tokyo Road
Soil Type	Dirt/rock
Terrain Type	Generally flat
Vegetation	Grass/woodland

APPLICABLE MAP SHEET. All grid coordinates listed in this order apply to the Quantico Military Installation Map V834S Edition 5-NGA 1:25,000

UTILITIES AVAILABLE

Electricity: Yes  
Lights: None  
Water System: None

INSTALLED COMMUNICATIONS. None

Nearest MEDEVAC Landing Zones (LZ)

		<u>MILES</u>
LZ Bluejay	1	0.0

**Directions:** LZ Bluejay located on Range 10 itself. Anywhere aircraft can land dictated by location of MEDEVAC individuals.

COMMUNICATION REQUIREMENTS:

1. A radio check is required immediately upon occupying any portion of the RTA, every 30 minutes in a live fire status and every 3 hours in a non-live fire status.
2. The Range Control Facility (RCF) Fire Desk Net Control call sign is "Range Control". Your call sign is "**RANGE 10**" (name of range, training area or facility unit is occupying).
3. The primary RCF Fire Desk Net Control frequencies are: ELMR talk group "RC Safety" (ground) and 323.7 AM UHF (air).
4. The secondary RCF Fire Desk Net Control is telephone, numbers: 703-784-5321 or 5322.
5. OIC/RSO will monitor the RCF primary and secondary Safety Nets at all times. Instant communication is required.
6. Any unit with organic ELMR radios will have their ELMR radios programmed with the "RC Safety" talk group and use those radios as their primary means of communication within the RTA.
7. Units without organic ELMR assets will be issued ELMR radios from RMB upon check-in.
8. Approved Non-ELMR radios are only authorized for internal communication (ground).
9. If the RCF cannot reach a unit within the RTA via primary communication, the unit will be contacted via the secondary means of communication.

10. Upon loss of primary communication the OIC/RSO will initiate a "check fire"/cease training status and will contact the RCF via secondary communication. This communication will be maintained while primary communication is being restored. Units may only resume firing/training once primary communication has been re-established and clearance is granted by the RCF.

**INJURY CLASSIFICATIONS:**

Injuries are classified into the following categories in order to aid in casualty evacuation from the RTA.

1. ROUTINE. Routine injuries are those injuries that are not threatening to life, limb or eyesight; and conditions or illnesses treatable by medication or procedures available at the base medical facilities.
2. PRIORITY. Priority injuries are those injuries that require immediate medical attention but are not threatening to life, limb, or eyesight if treated promptly.
3. URGENT. Urgent injuries are severe injuries that are threatening to life, limb, or eyesight and require immediate medical attention.
4. MASS CASUALTY. A mass casualty is a series of injuries with multiple priority and urgent medical patients.

**MEDICAL EVACUATION (MEDEVAC) PROCEDURES:**

1. Injury occurs.
2. Range immediately cease-fires.
3. Medical support evaluates/treats injured personnel.
4. Range OIC/RSO notifies the RCF of the injury, is the victim conscious/unconscious and what type of MEDEVAC transportation is requested (ground/air).
5. The OIC/RSO must maintain constant radio contact with Range Control and awaits further instructions.



Installation Range Safety Officer

29 November 2022